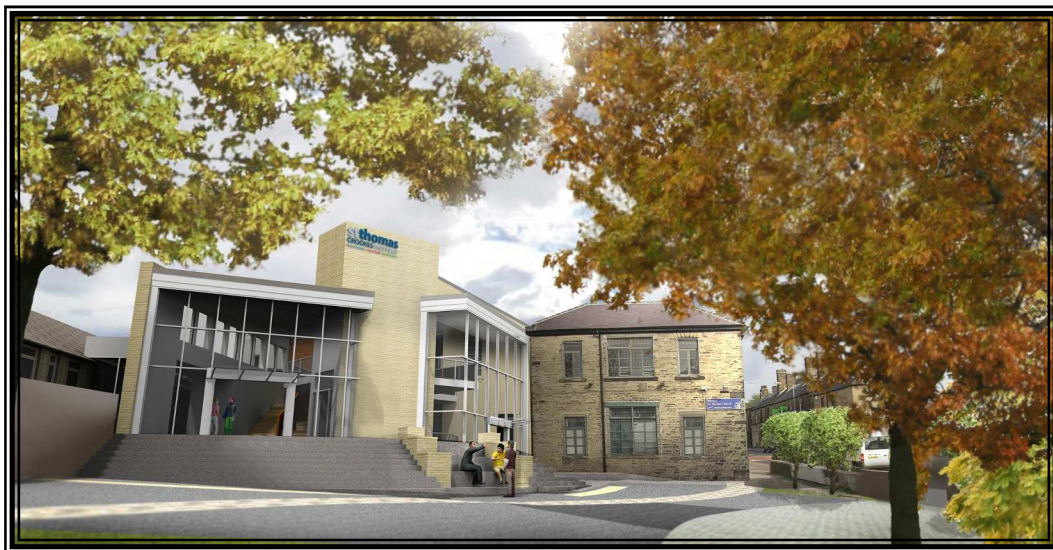


At St Thomas Crookes we have a long history of providing high quality leadership and discipleship training for our own church, the city and region, and increasingly having a national and international profile.

The time has now come to take the next exciting step and develop a **Training and Theology Centre** here at St Thomas Crookes. The plan is to link the existing *church* and *church centre* buildings in order to provide better access and improved facilities. This centre will have a wide remit, benefitting those in the local, national and international church. This is indeed an exciting project!



## WHY?

Why do we need to redevelop the Crookes Campus?

The existing facilities are well used but now ready for a dynamic makeover!

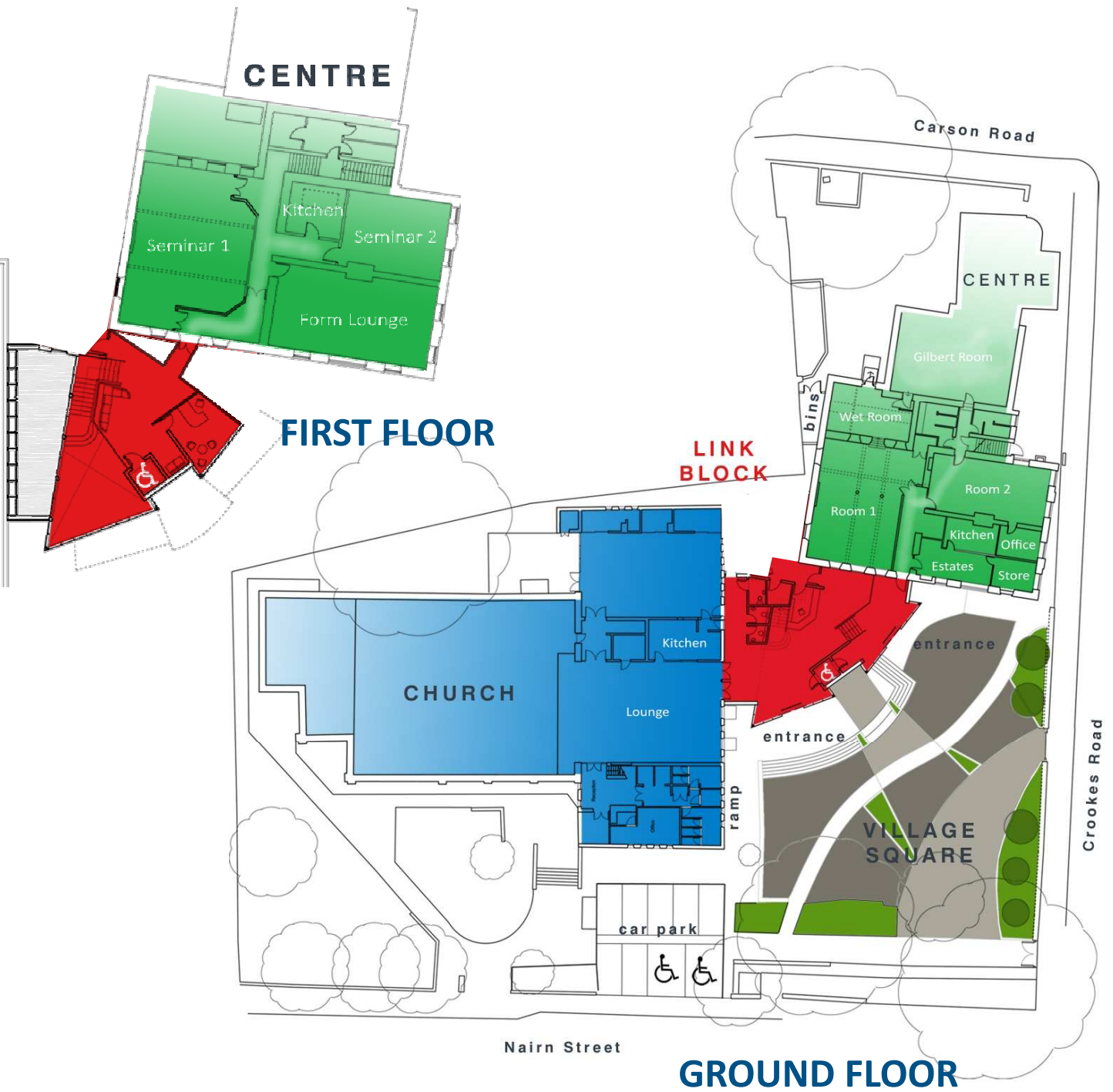
The linking of the church and church centre will bring a much needed permanent connection between these two busy buildings in three major ways:

- UP:** a **spiritual** connection – one integrated campus at the heart of which is prayer, worship, training and service and where all who enter will be able to ‘meet God’.
- IN:** a **community** connection – where trainees, theology students, interns and church family, as well as the local and wider community in Sheffield and beyond, can gather; a place to ‘meet friends’.
- OUT:** a **mission** connection – the new centre would become a ‘sending place’ to serve our local community, city, nation and the nations with the good news of God, that with Jesus Christ we can indeed ‘live life better’.



# WHAT?

This exciting campus redevelopment will address several key areas ...



## Facilities

*A new disabled WC will be included in the link block. New toilet and kitchen facilities will be available on both floors of the church centre.*



### ***New Entrance***

*The link block will be the new glass fronted entrance to both the church and the new training centre.*

*The steps and frontage will act as an outdoor stage area looking out onto the new village square which in itself will give quiet space for both recreation and study.*

### ***Entrance Lobby***

*Glass sliding doors at two levels will take you into the new entrance lobby where you will find the welcome desk, church office and new toilet facilities. New stairs and lift will take you to the first floor. From the lobby ground floor you will move either into the church via the new doors at the back of the present lounge or to the training centre through a new corridor access.*

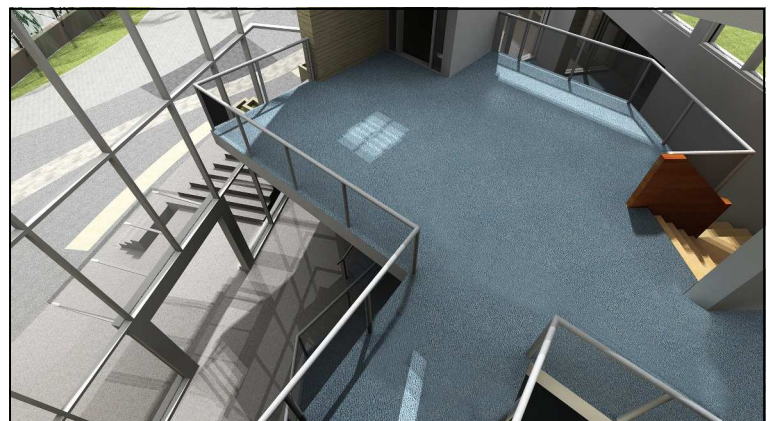


### ***Village Square***

*The well worn playground will be transformed into an exciting village square with pedestrian access, plantings etc and become a dynamic outdoor gathering area. There will be restricted vehicle access from Crookes as appropriate.*

### ***First Floor***

*A flexible, creative design on this level will give an open seating space allowing study, seminar and discussion facilities as well as a great place to enjoy a coffee! From this level there will be new access to the first floor seminar rooms. There will be extensive views from this floor through the glass frontage onto the village square, Crookes and the city and two exciting 'atrium' views looking down onto the new lounge entrance on the ground floor and the new, lower, ground floor entrance to the training centre.*



## HOW?

How will this exciting project take place?

To go forward we need to:

**know** the vision – **own** the vision – **resource** the vision

We hope the information available will help you *know* and *own* this dynamic redevelopment and then enable you to decide how you can play your part in *resourcing* this vision.

Here are some big 'HOW?' questions ...

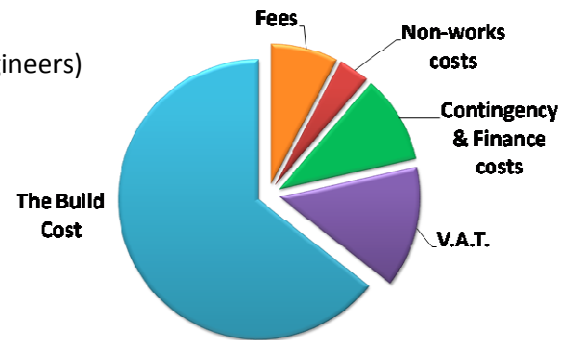
### How much will it cost?

The figure set is £950,000 The key areas of cost are as follows ...

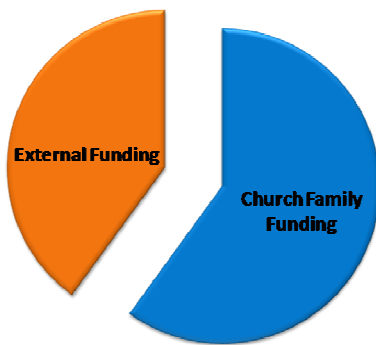
|                                      |          |                                    |
|--------------------------------------|----------|------------------------------------|
| Building (works) costs:              | £720,000 |                                    |
| Non-works costs:                     | £21,000  | (equipment, IT etc)                |
| Contingency & Finance costs:         | £34,000  |                                    |
| Fees:                                | £60,000  | (architects, surveyors, engineers) |
| VAT (20% on most but not all costs): | £165,000 | (speaks for itself!)               |

**TOTAL: £1,000,000**

### Project Expenditure



### Project Income



### How will we pay for it?

We will be looking to raise the majority of the cost through the church family here at St Thomas Crookes with the balance from outside sources through various income streams (see *Income* pie-chart). We would look to borrow the finance needed (£750,000) and pay it back over an agreed period – hence the need for 5 year pledges as well as 'one-off' money gifts.

### How can I/we give financially to this project?

There are many ways we can support this project with our time, effort, encouragement and faith filled prayers. However, if it is to proceed we will need to give our finance to support it. What you give as an individual / couple / family is between you and God and we then trust him to get the totals right, but in round terms if 100 tax paying 'givers' pledged to give £100/ month over a 5 year period that would raise around £750,000.00 – sounds simple doesn't it! Some will give less and some will give more ... and the Lord will sort out the total.

## NEXT STEPS?

We now have all the permissions we need to proceed.

### Now is the time...

#### to give:

Standing Order forms are available from the church office. Many people have already begun to give regularly. You can also give one-off cash or cheque gifts (clearly identified as 'Campus Redevelopment' please) or online at [www.charitygiving.co.uk/campus](http://www.charitygiving.co.uk/campus). If you are able, please Gift Aid your giving.

#### to build:

We have a contractor appointed and subject to funding, we hope to begin building late 2011 / early 2012.

May the Lord bless us and those we love as we prayerfully consider our part in this exciting, God given Campus Redevelopment project which we pray will play its part in bringing God's goodness to our city and bringing his transforming love to our nation and beyond.

If you have any questions or want further details please contact the church office on 0114 267 1090 or email [admin@stthomascrookes.org](mailto:admin@stthomascrookes.org).